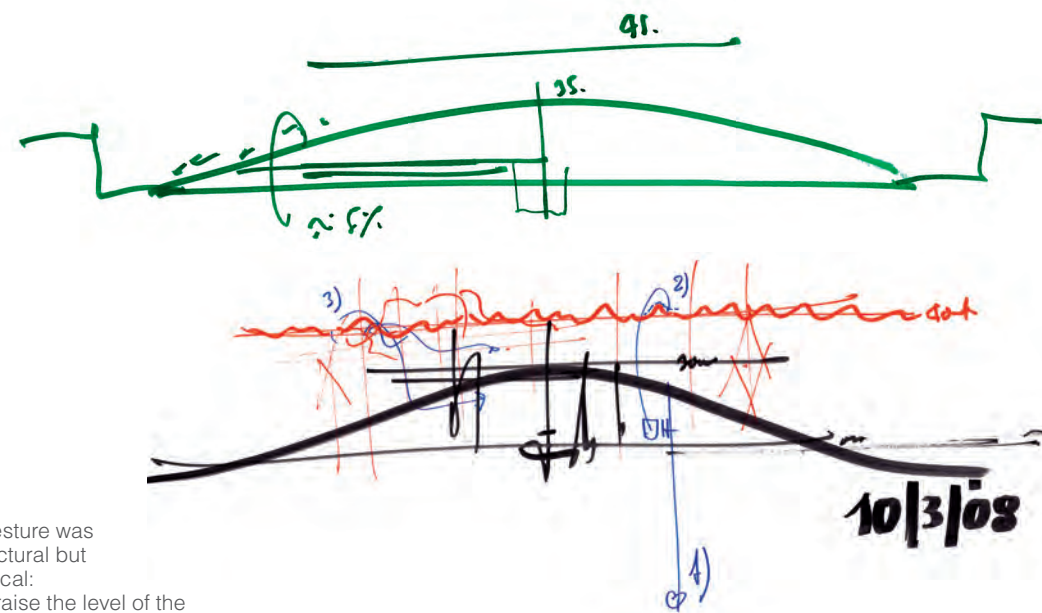
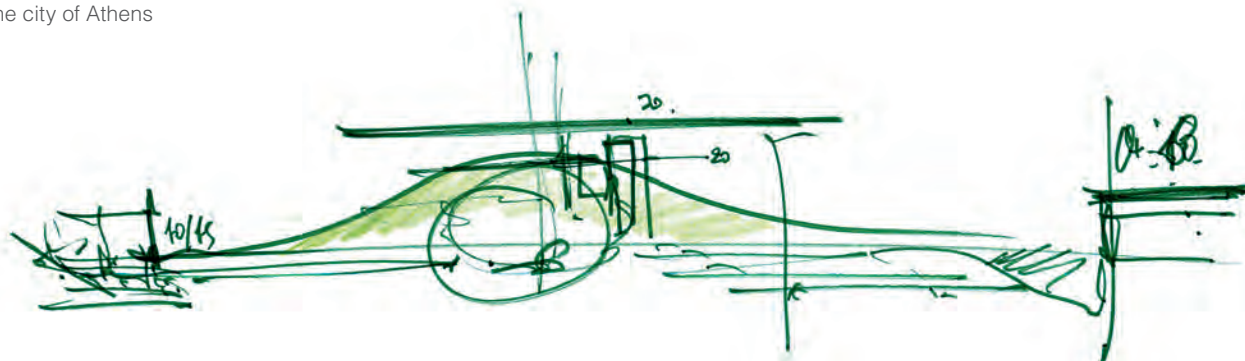


Il primo gesto da fare non era progettuale, ma topografico: dovevamo sollevare il terreno e disegnare un parco inclinato che da terra salisse verso il mare. Così avremmo riscoperto il mare davanti e la città di Atene alle spalle.

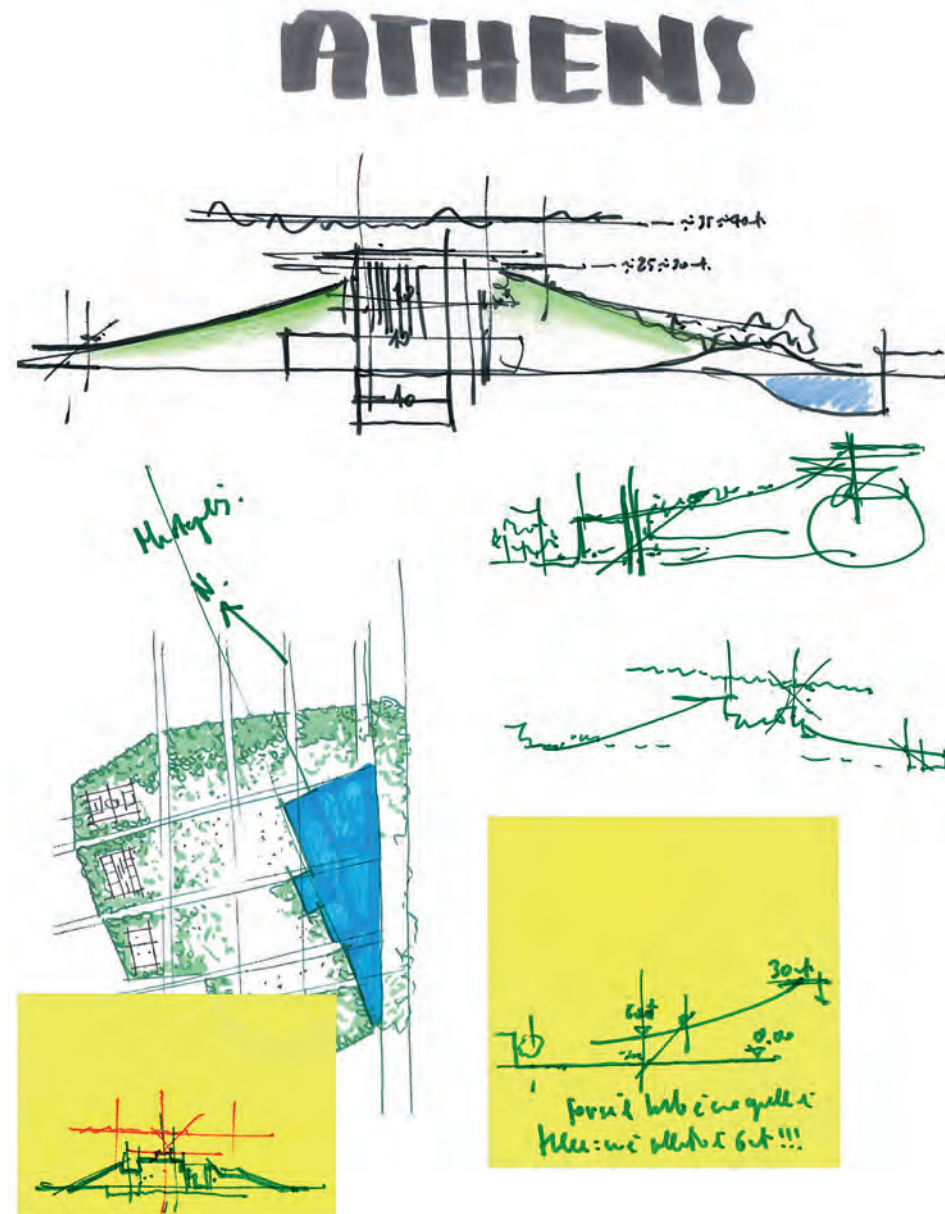
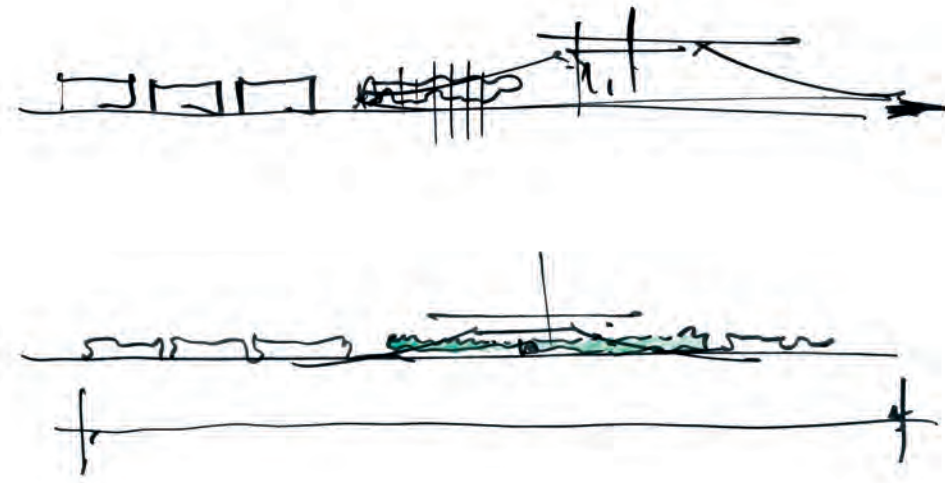


The first gesture was not architectural but topographical: we had to raise the level of the ground and design an inclined park rising from the ground to the sea. In this way we would rediscover views of the sea front and the city of Athens behind.

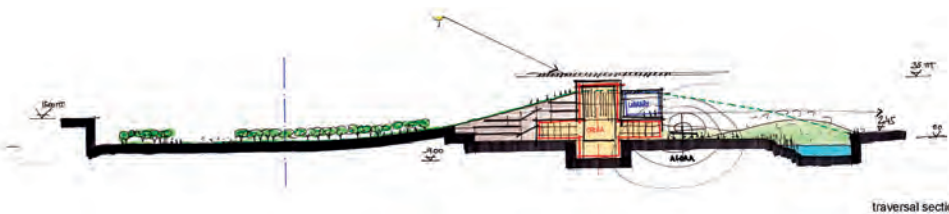
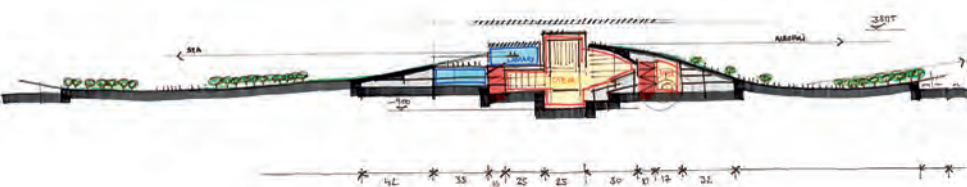


Andreas Dracopoulos,
Renzo Piano





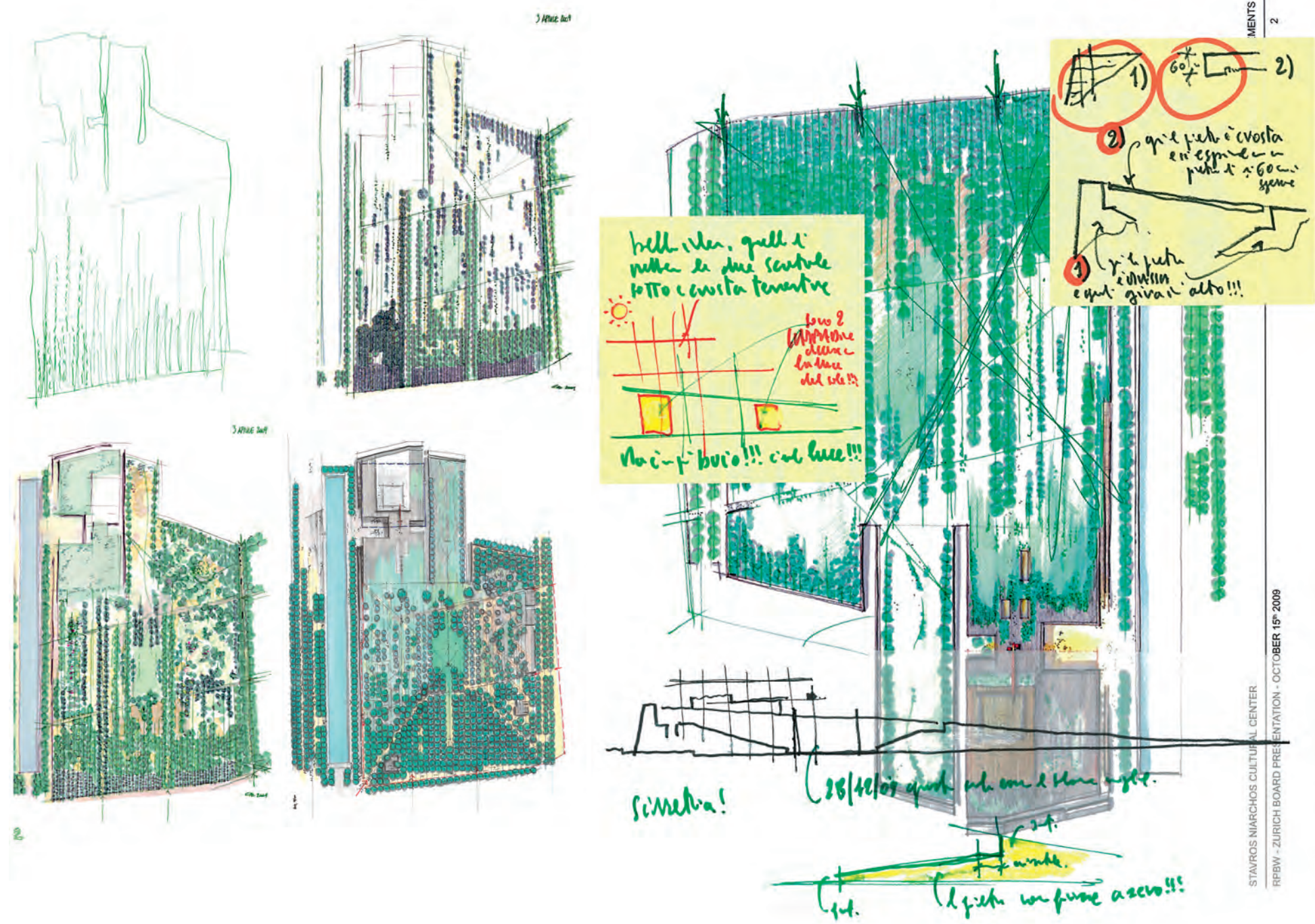
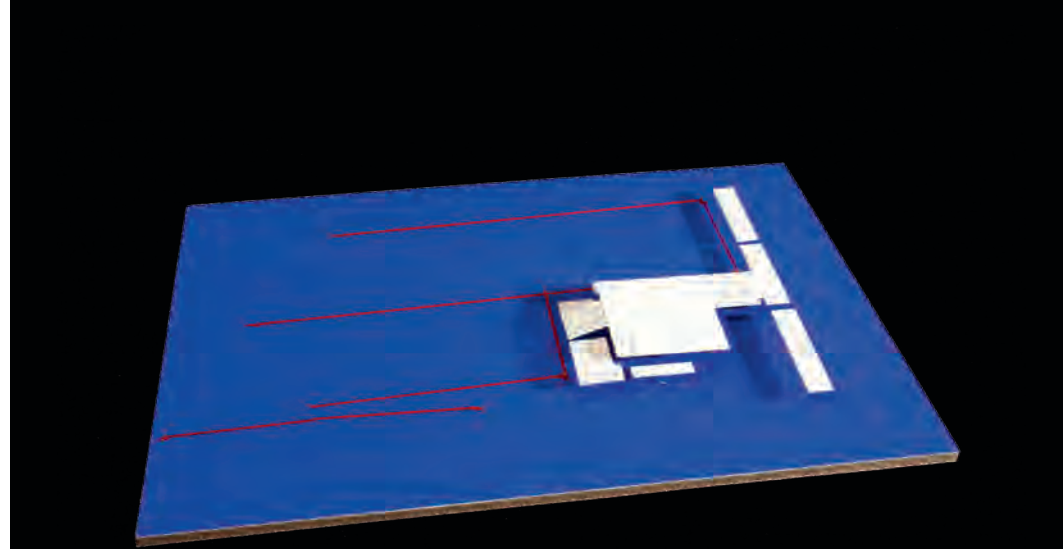
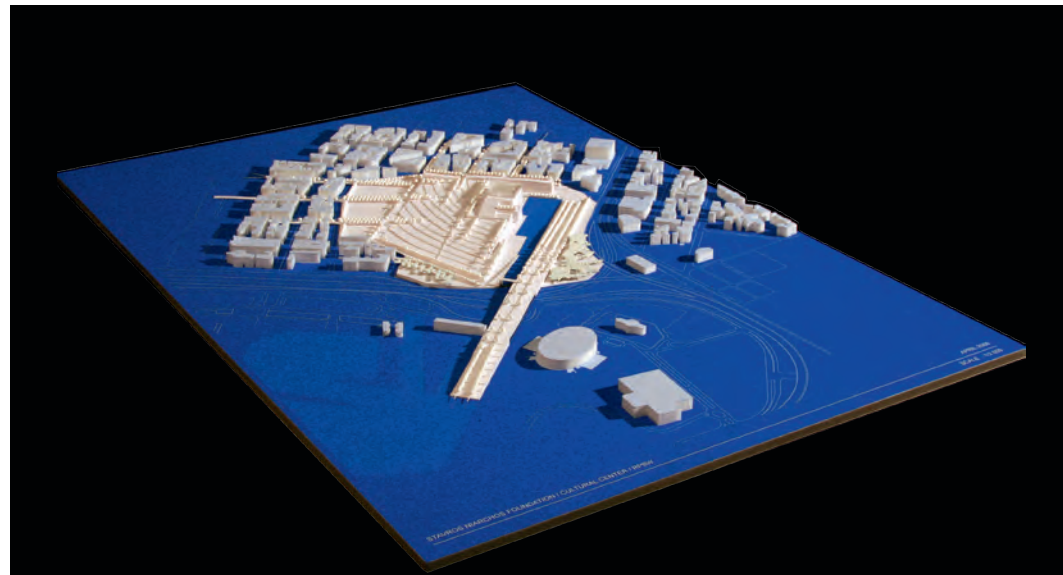
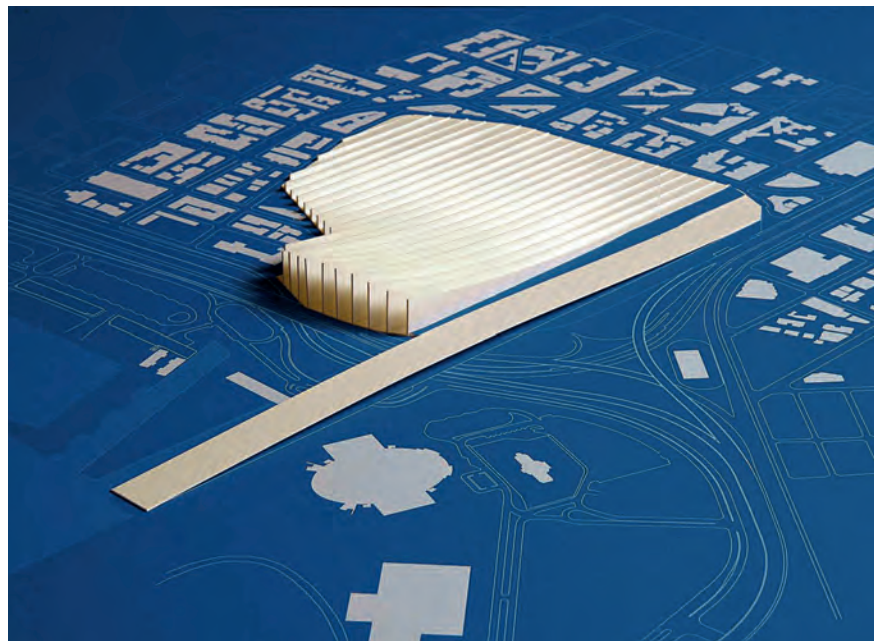
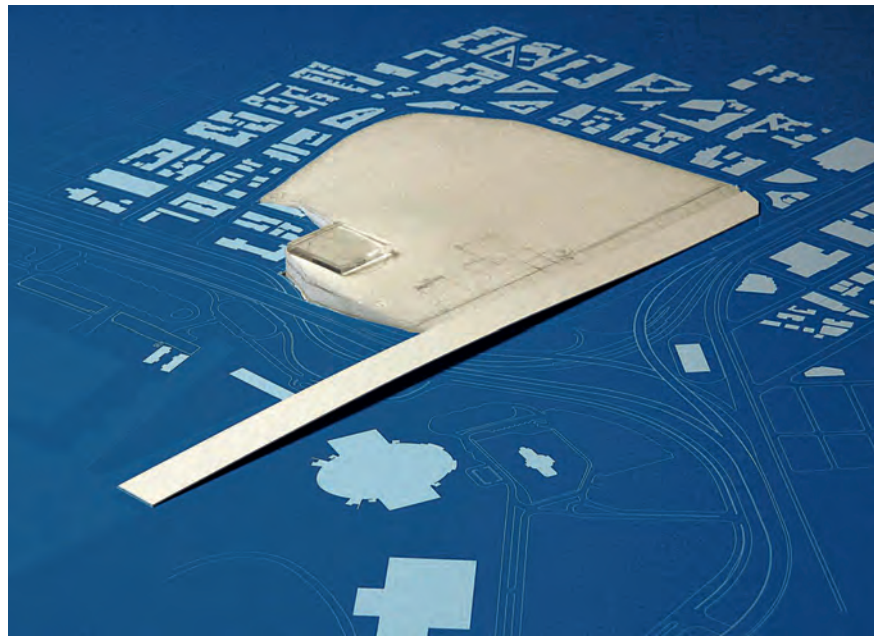
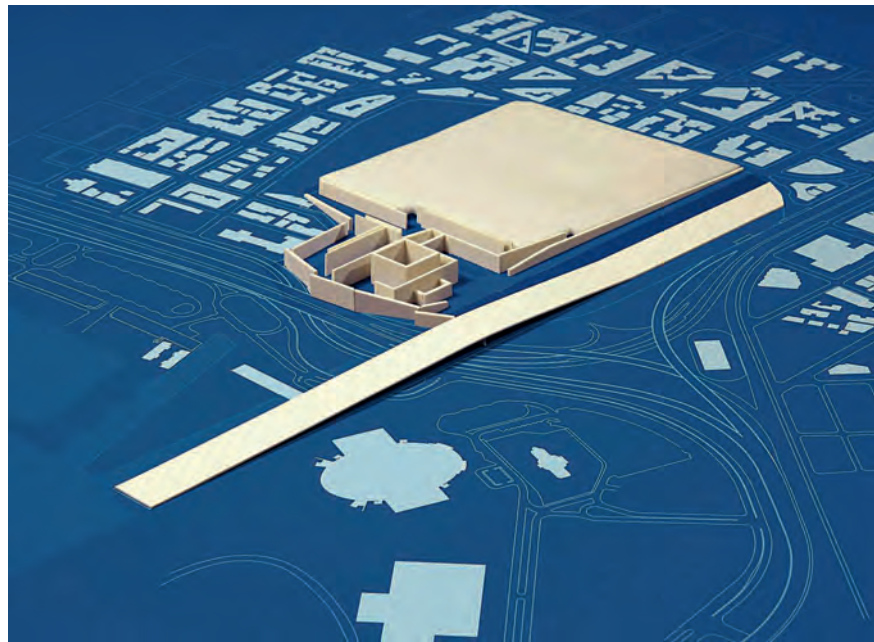
Groundbreaking: inizia il cantiere! Breaking ground: building starts!
 È il 20 dicembre 2011. It is December 20, 2011.



Percorrendo 500 metri di parco si raggiunge la sommità della collina artificiale, a 32,5 metri sul livello del mare.

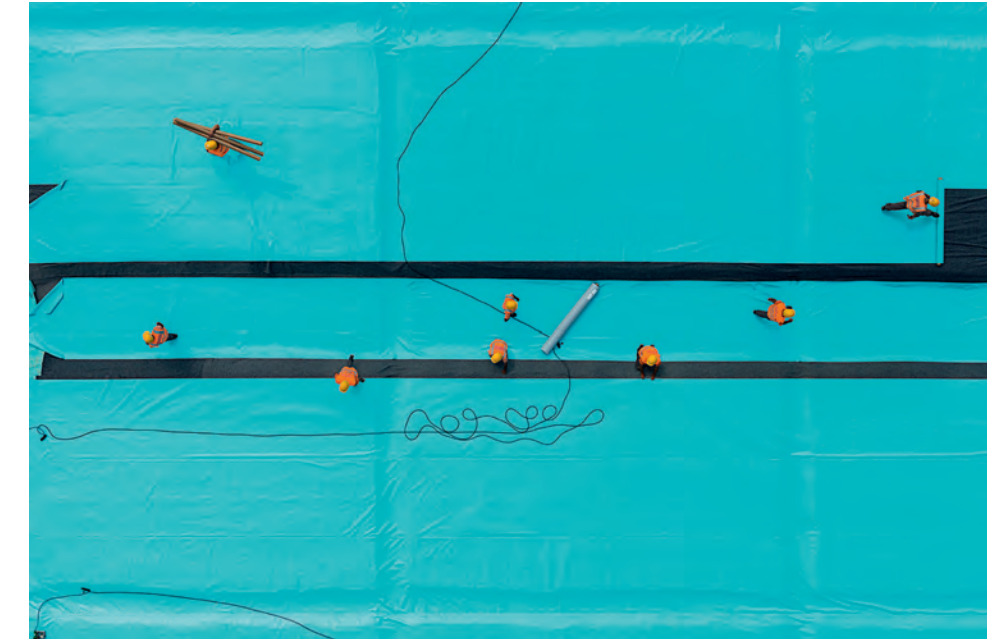
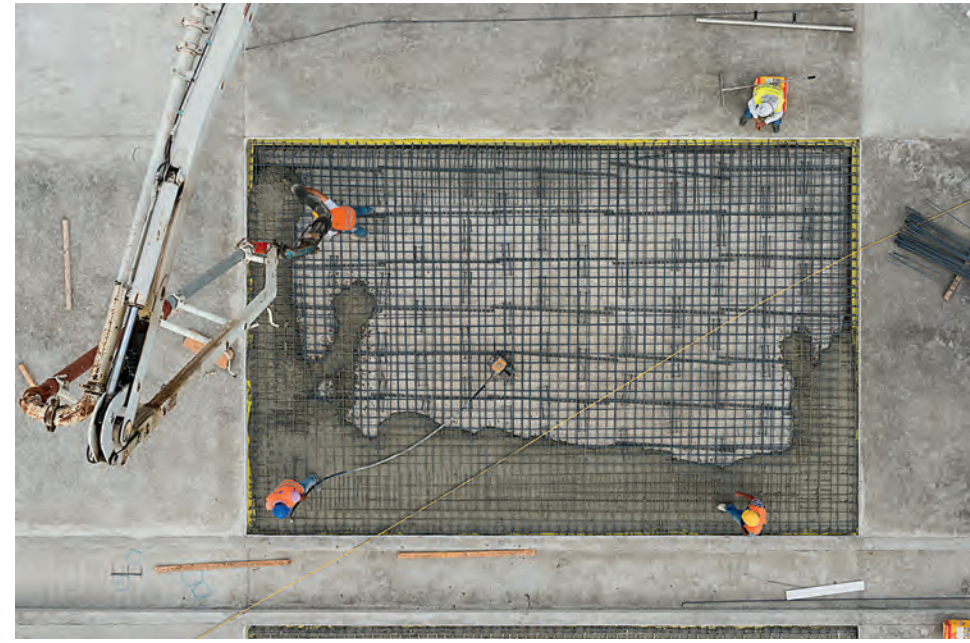
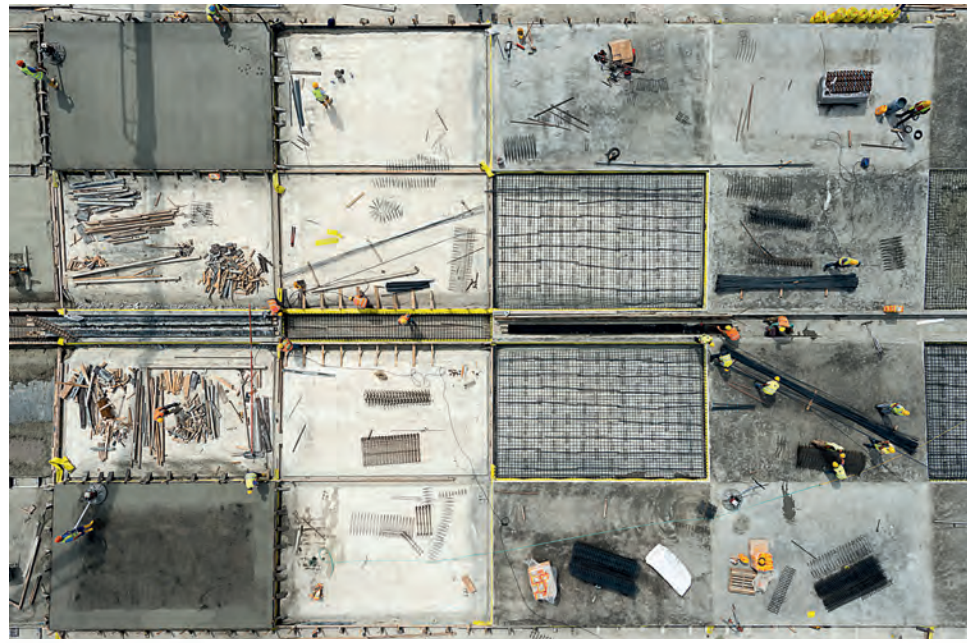
Strolling through the first 500 meters of the park you come to the top of the artificial hill, 32.5 meters above sea level.





STAVROS NIARCHOS CULTURAL CENTER
 RPBW - ZÜRICH BOARD PRESENTATION - OCTOBER 15th 2009





La filosofia è quella di
 offrire alle
 persone un
 - Occhio a Pando
 a vento !!!
 - Volt Cellini!

l'energia di gold
 affettive, on supply the
 was invited a Green, per
 perché affetto, 2700
 a fall! Percorso
 tollerance, unicità.
 progetto

Abbiamo: shu a don for
 your father. To give
 strength, unicità for the
 energia of padre agli
 affettive e del his soffitti.

- ripropone YUNWAI!

land
 film

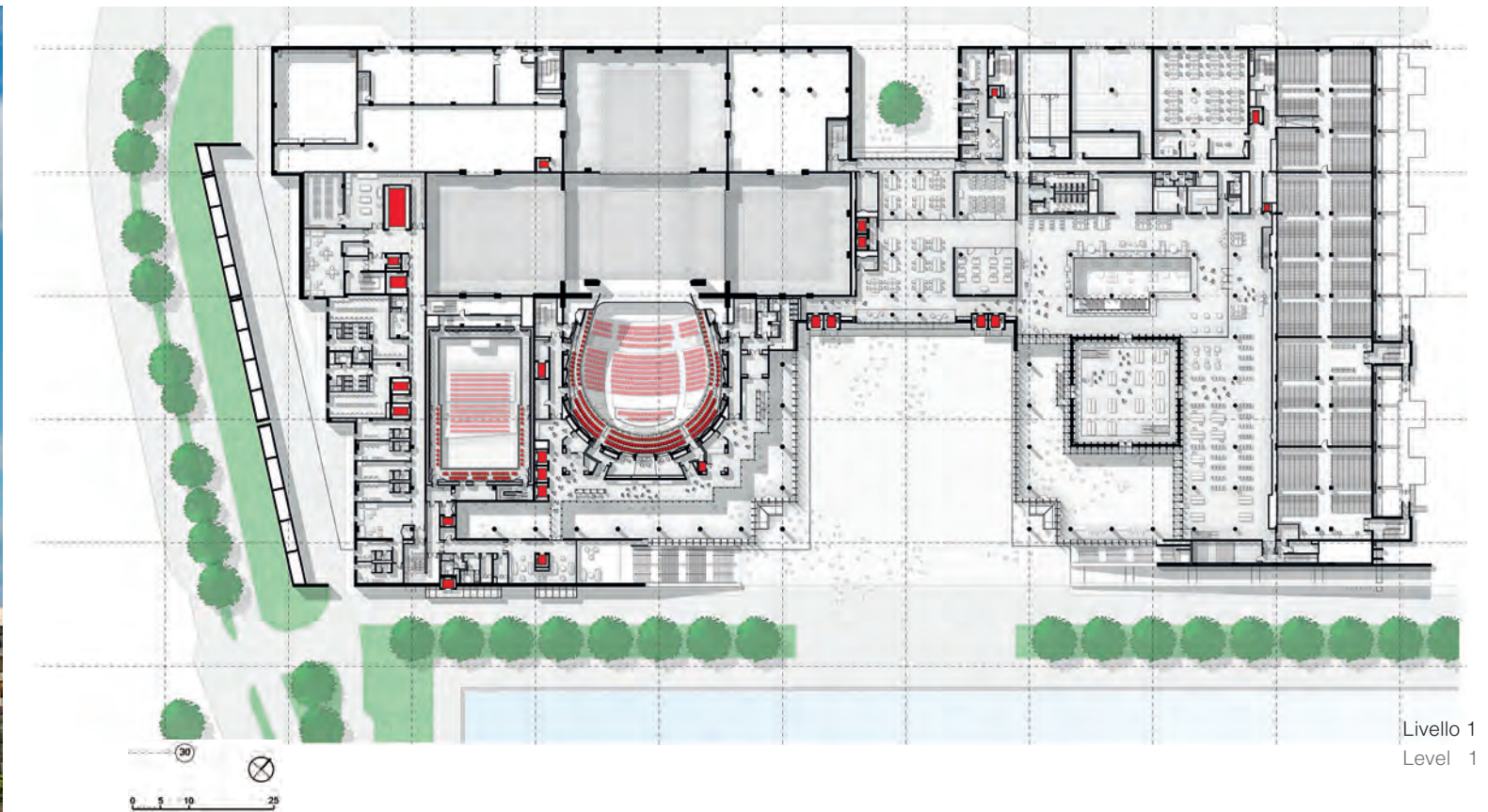
l'acqua
 cubetti!

Abbiamo immaginato un
 grande canale, largo 30 metri,
 lungo 400 e profondo 150
 centimetri. Non è ancora il
 mare, ma un suo avamposto.

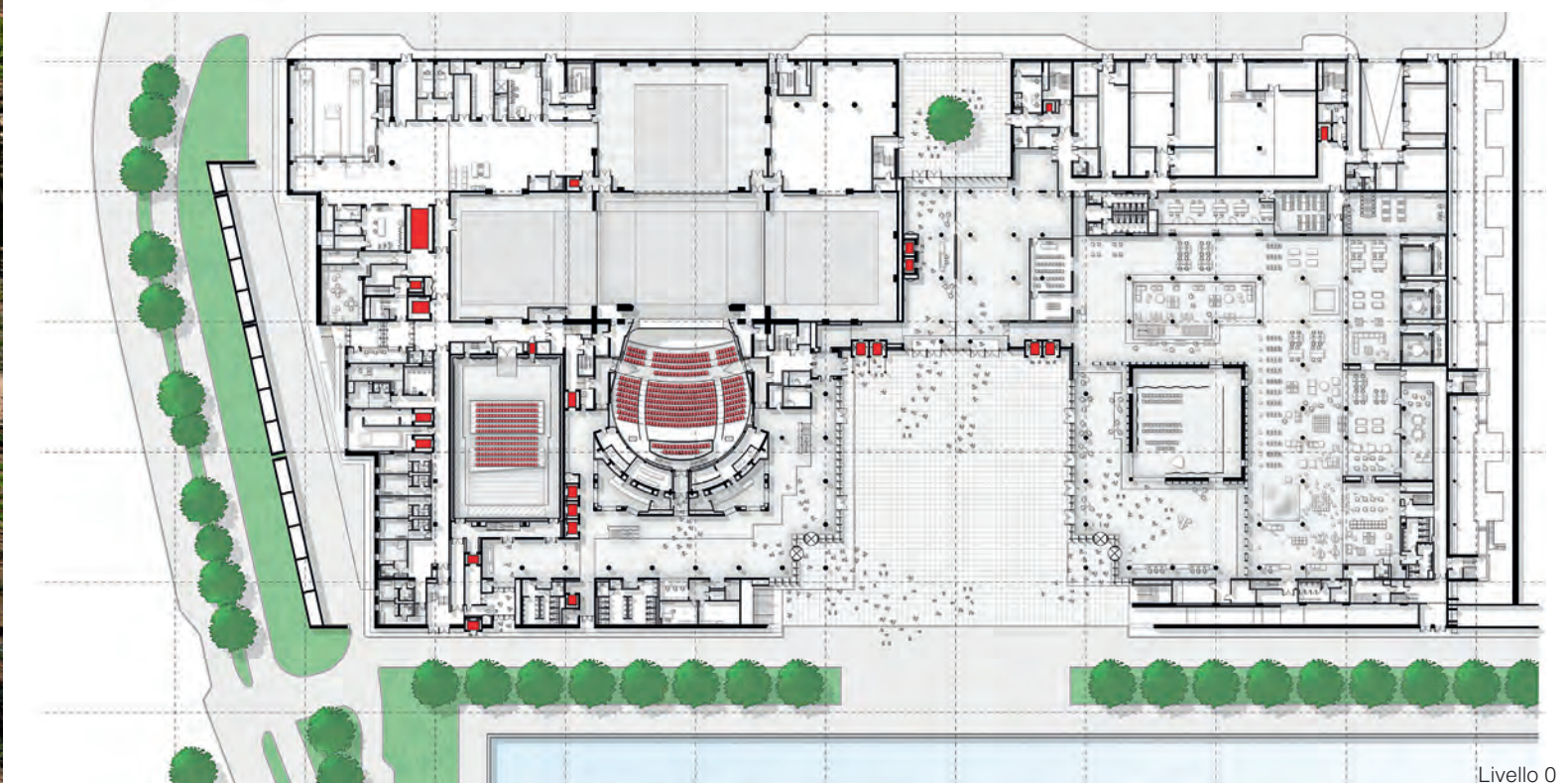
We imagined a great canal,
 30 meters wide, 400 long
 and 1.5 deep. It is not the sea,
 but an offshoot of it.







Livello 1
Level 1



Livello 0
Level 0



