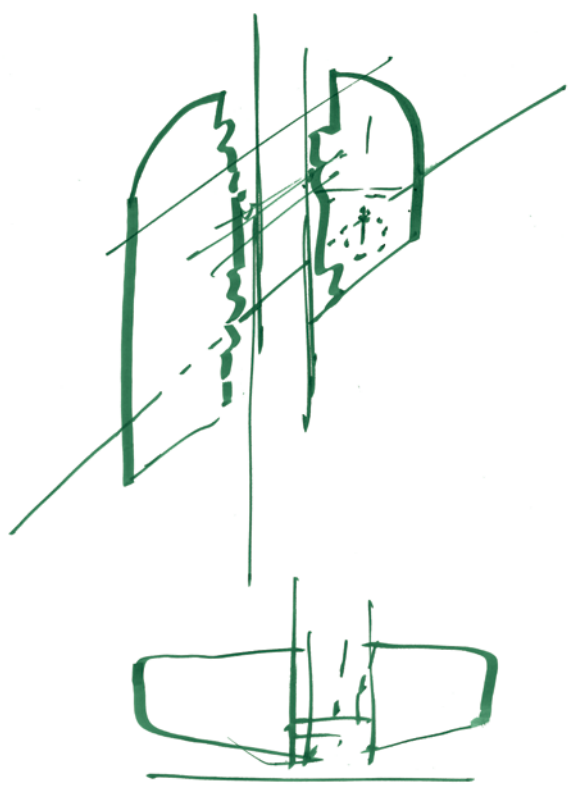
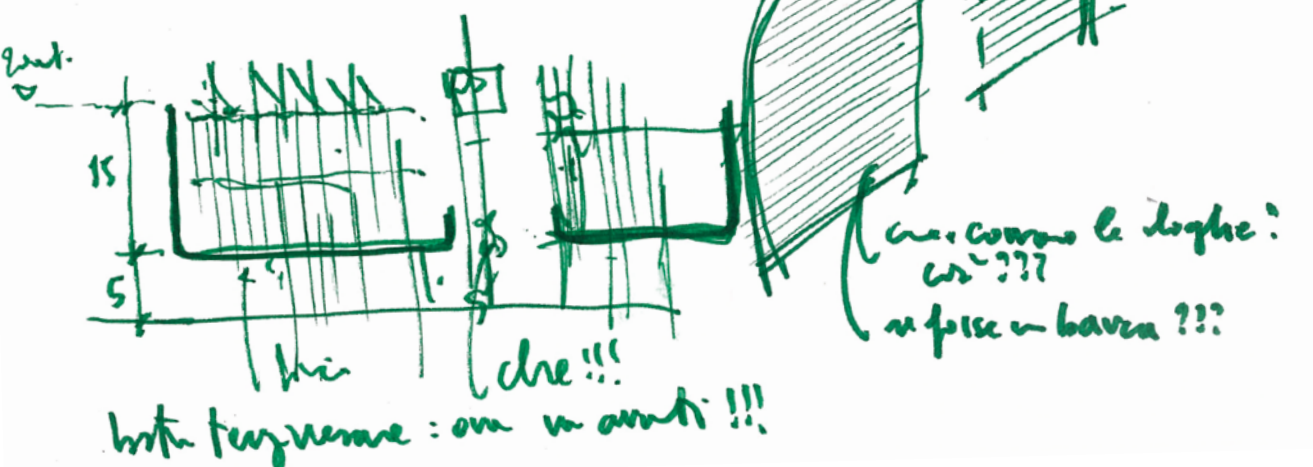
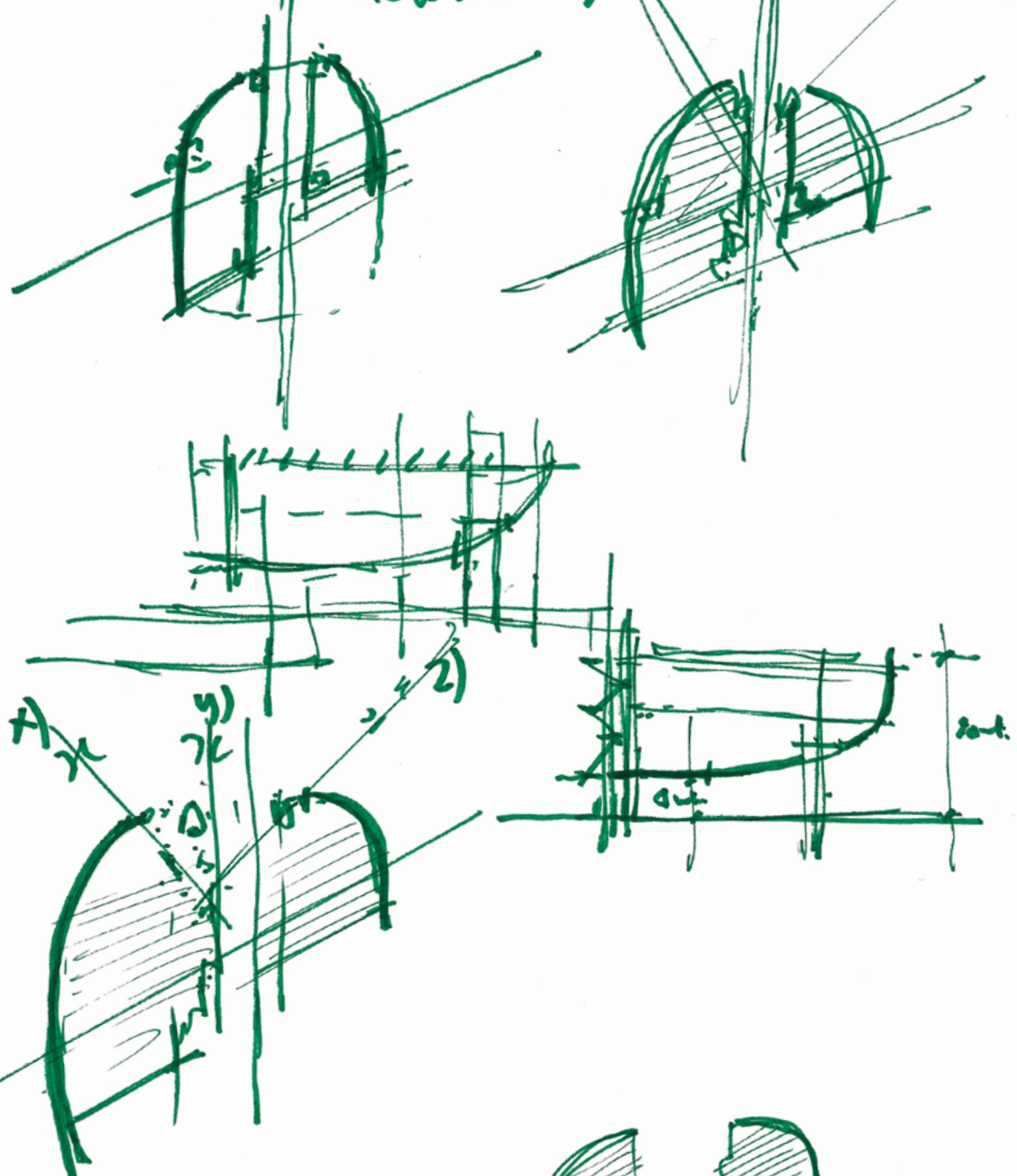
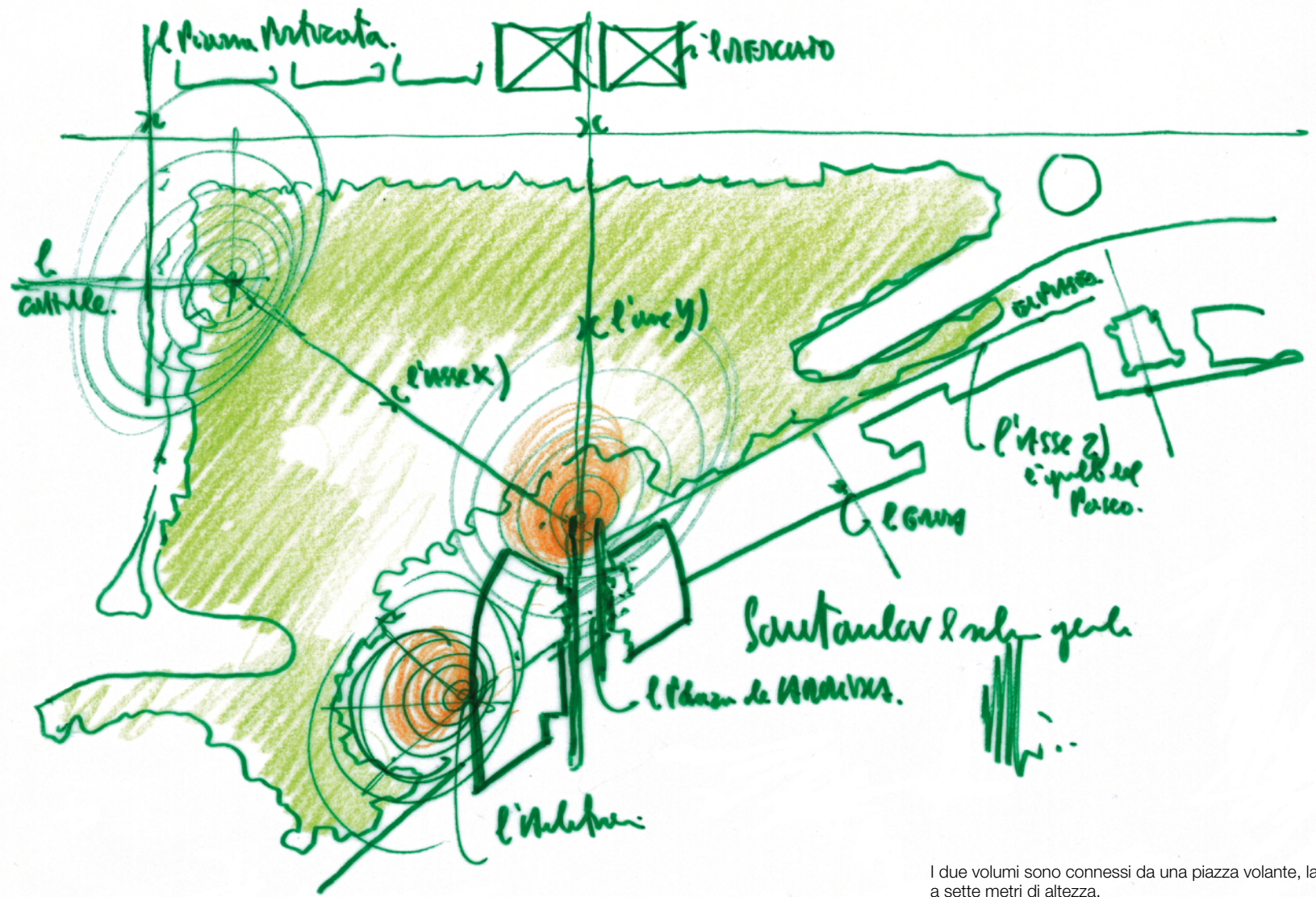


SANTANDER

22/10/04
Calle de la Paz

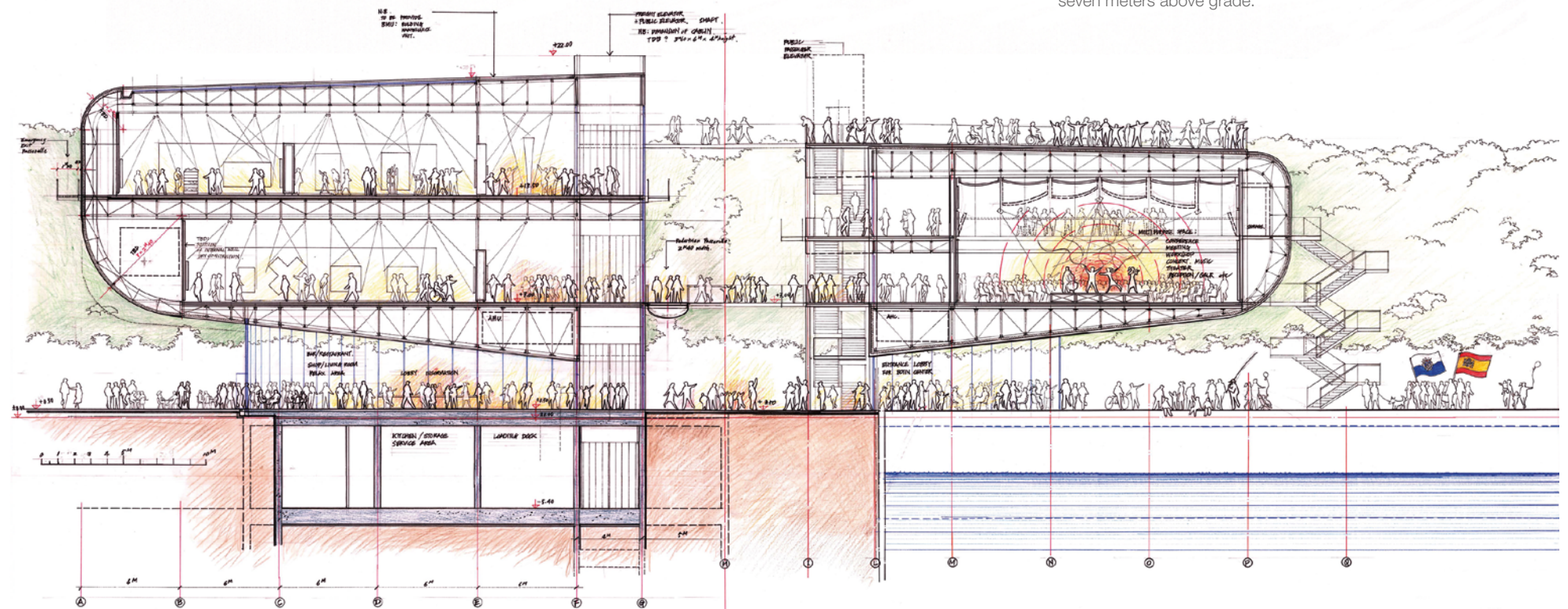


SANTANDER
12.11.11



I due volumi sono connessi da una piazza volante, la plaza de arriba, a sette metri di altezza.

The two volumes are connected by a flying plaza, the plaza de arriba, seven meters above grade.



Studi volumetrici: spostando la posizione dell'edificio si lavora su una forma più organica. Per immaginarla si usano due ciottoli di mare raccolti sulla spiaggia di Punta Nave.

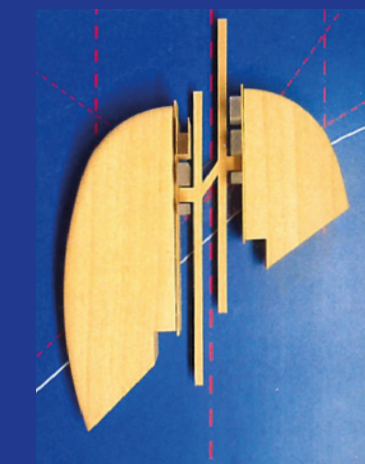
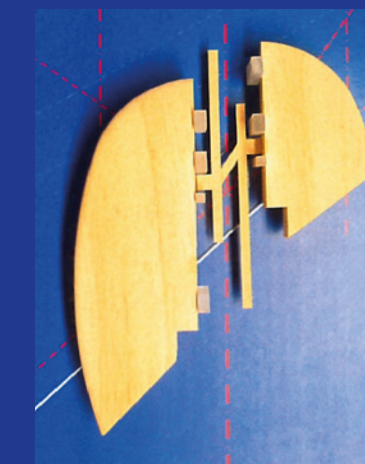
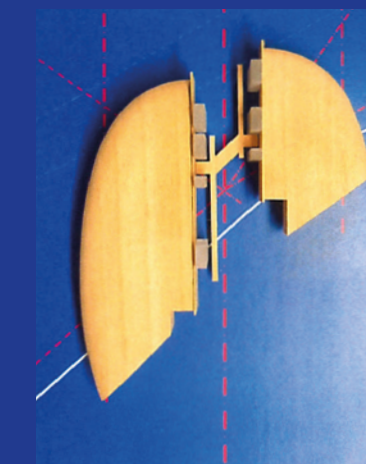
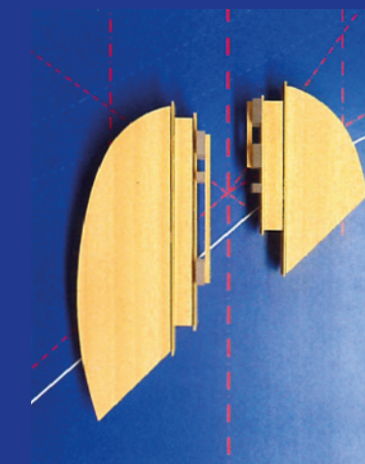
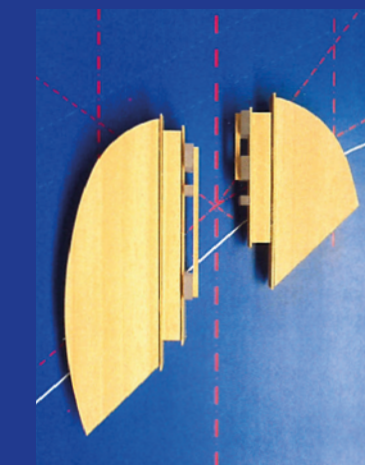
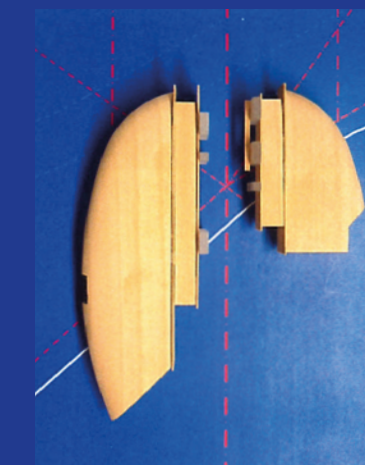
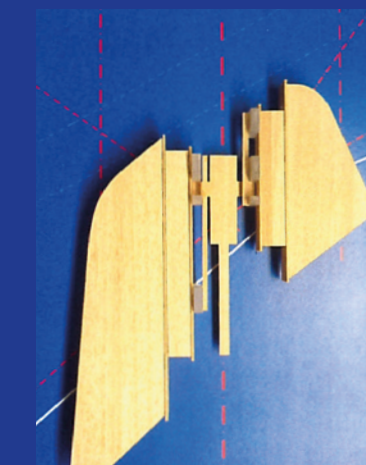
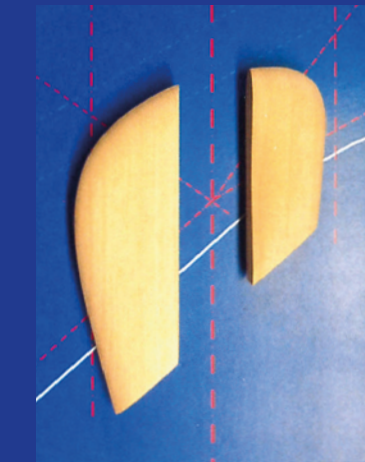
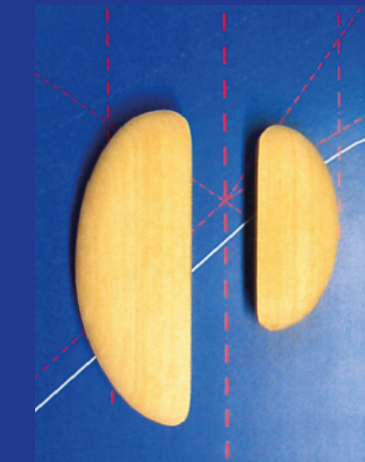
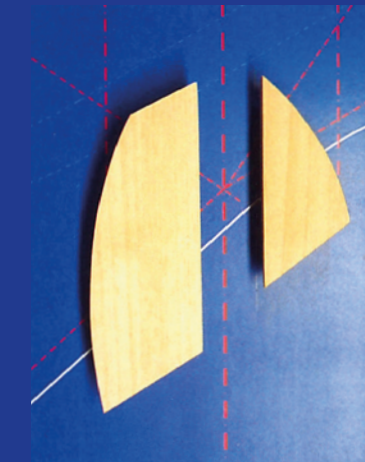
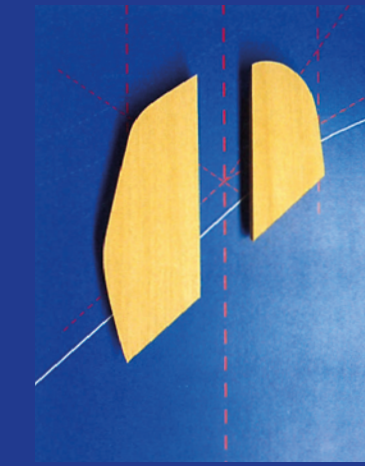
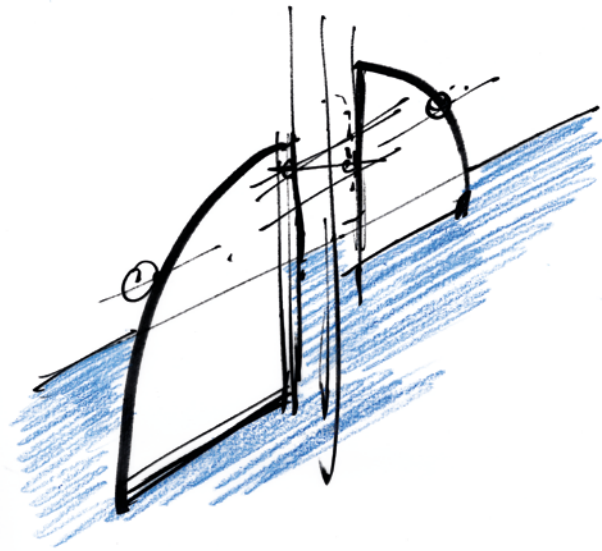
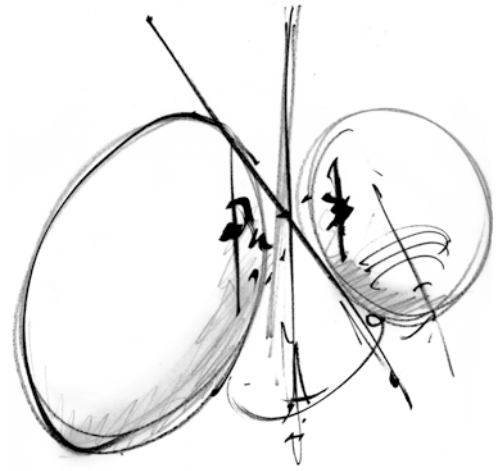
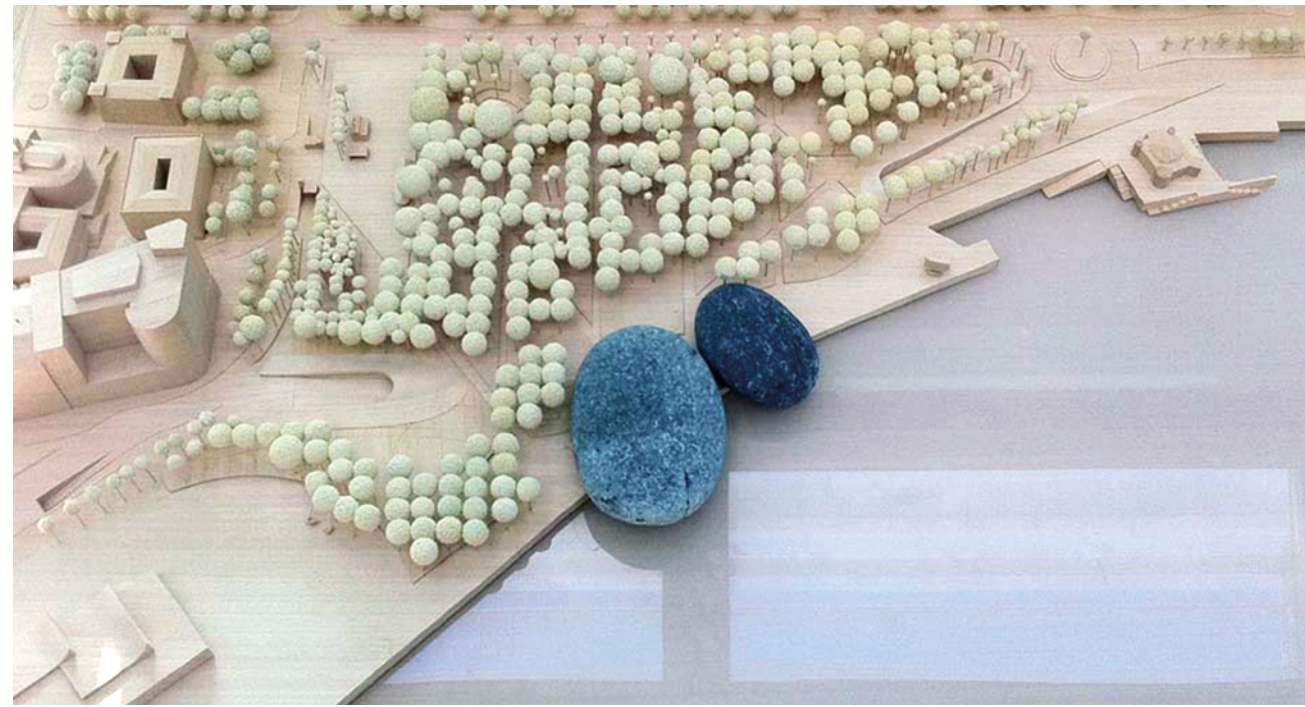
Volumetric studies: moving the position of the building enabled us to work on a more organic form. To imagine it, we used two sea pebbles picked up on the beach at Punta Nave.

Nella pagina seguente

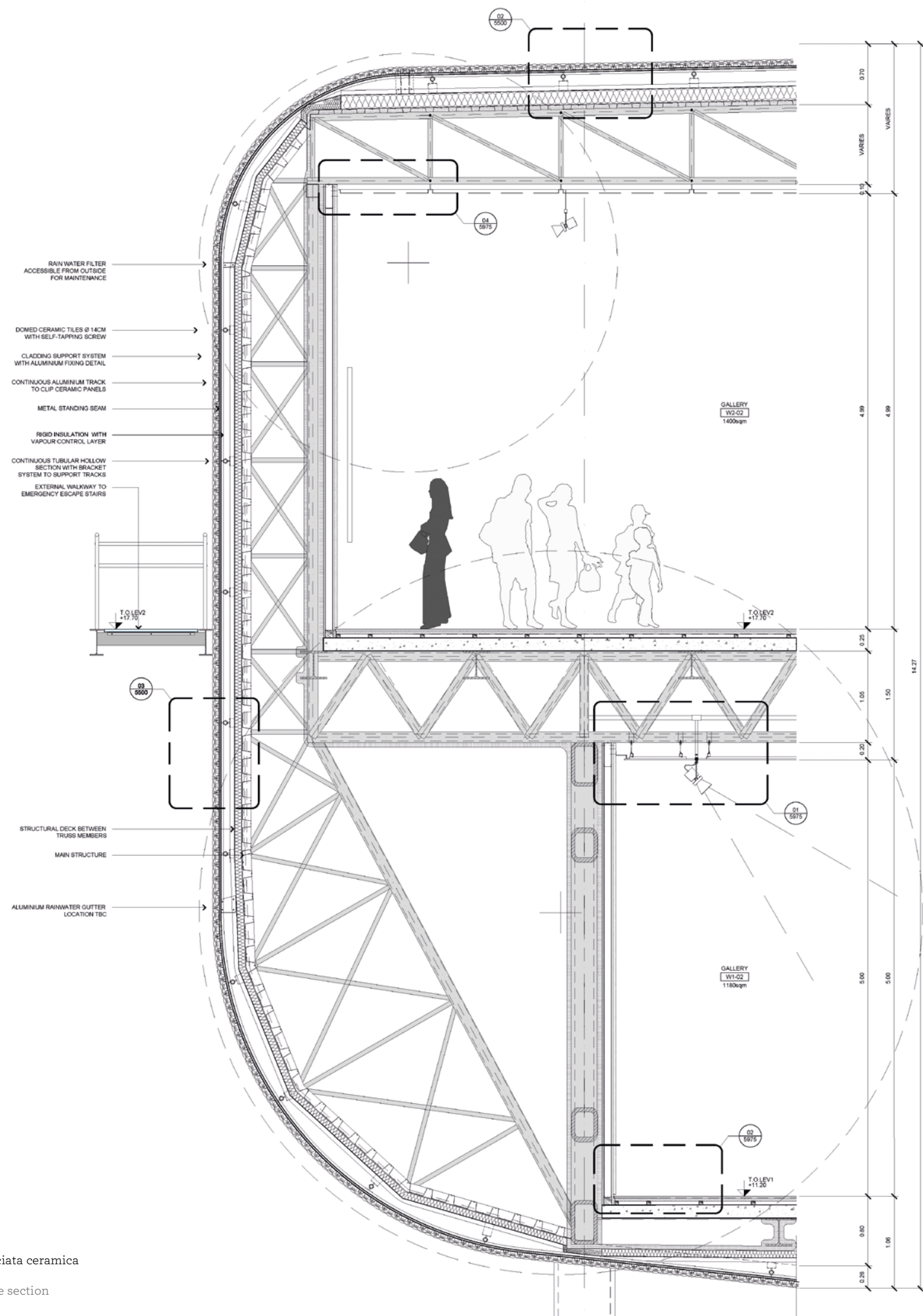
L'evoluzione dell'edificio nei mesi tra settembre e dicembre 2011. Diventa chiaro che la forma arrotondata avrebbe portato più luce al piano terra e garantito la vista del mare dalla città.

In the next page

The building's evolution between September and December 2011. It becomes clear that the rounded form would shed more light to the ground floor and guarantee a view of the sea from the city.







Sezione della struttura e facciata ceramica

Structure and ceramic facade section

